

The logo for GoldSpot Discoveries Inc. features the word "GOLDSPOT" in a bold, yellow, sans-serif font. The letter "O" is replaced by a circular icon containing a pickaxe and a grid pattern. The word "DISCOVERIES INC." is written in a smaller, white, sans-serif font below it.

GOLDSPOT

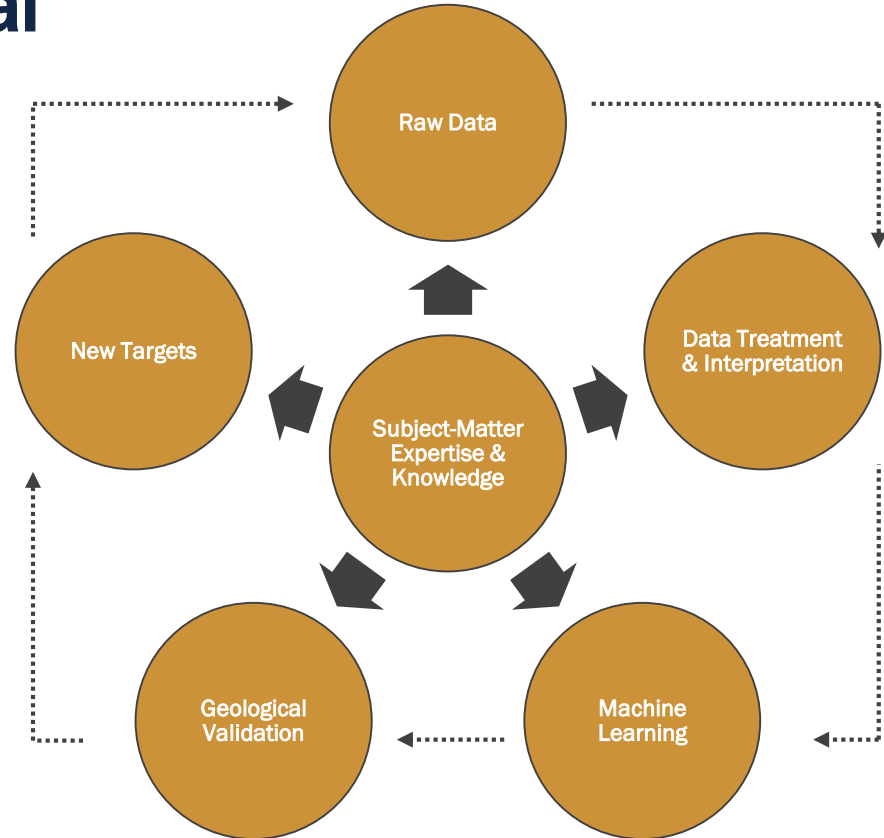
DISCOVERIES INC.

Technical Services Workflow

Feb 2019

Workflow for AI in Mineral Exploration

GoldSpot has developed a workflow that ensures the maximum amount of data is utilized and analyzed in the correct manner, while keeping a flexible approach to adapt to the many different deposit types around the world. This workflow has been tested and honed through projects with clients since 2016.

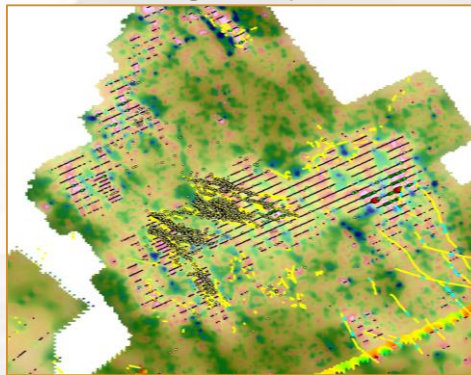


Data Interpretation

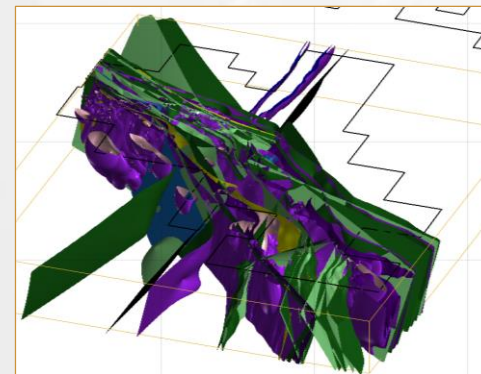
A deep understanding of the data is a necessary condition of success. Once the data is transformed, significant amounts of time are spent on this stage to develop a clear view of the project and the end gold.

- Perform traditional geoscientific investigative work
- Highlight which variables control the distribution and grades of the deposit
- Combine geological data and interpretations in the 2D and 3D space

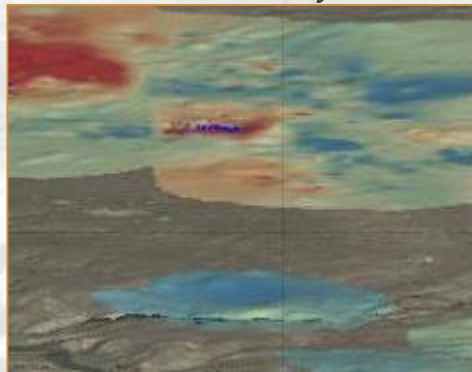
Interpreting Geophysical Data



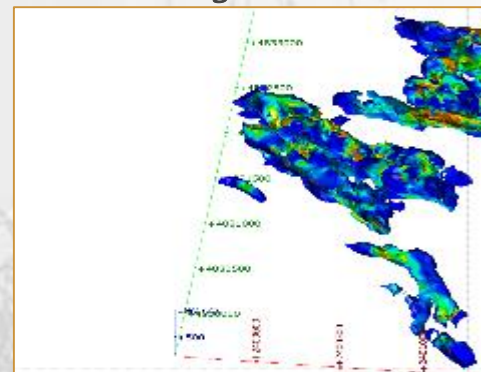
Geological Modelling



Vectoring Alteration through Statistical Analysis



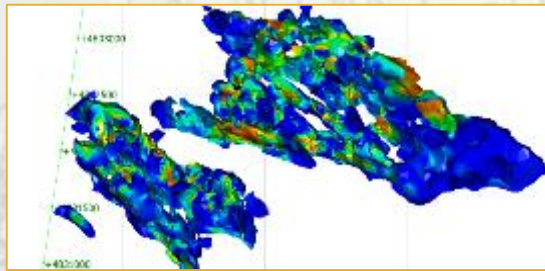
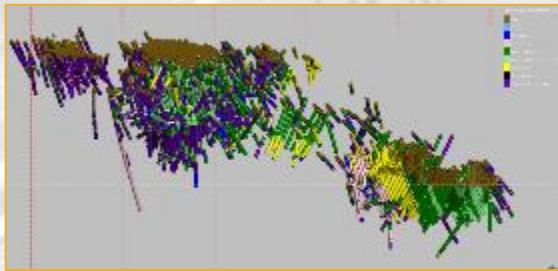
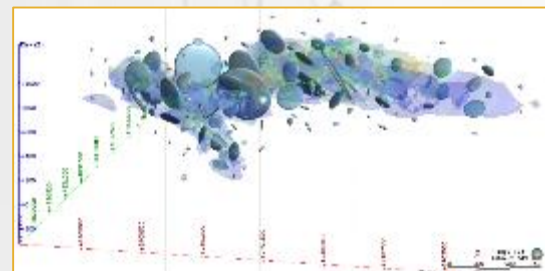
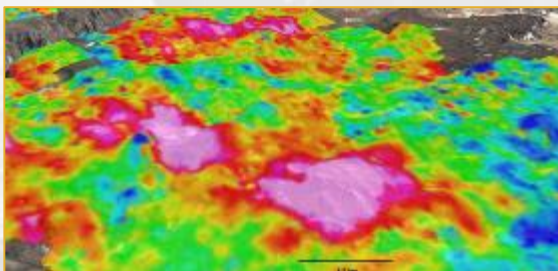
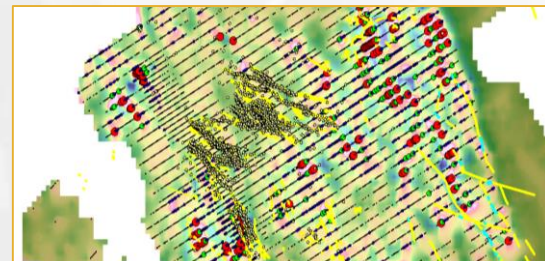
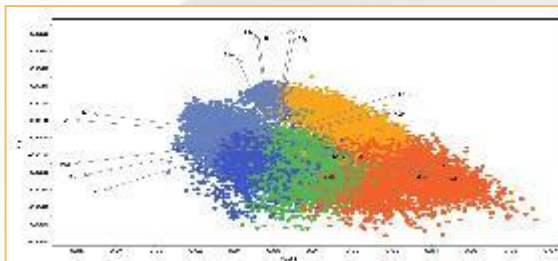
Combining numerical and lithological models



Machine Learning

One all the data is treated to our satisfaction, the data is then run through a series of machine learning algorithms in order to predict zones with high mineral potential. A variety of methods are used, and new techniques are continuously being tested and developed.

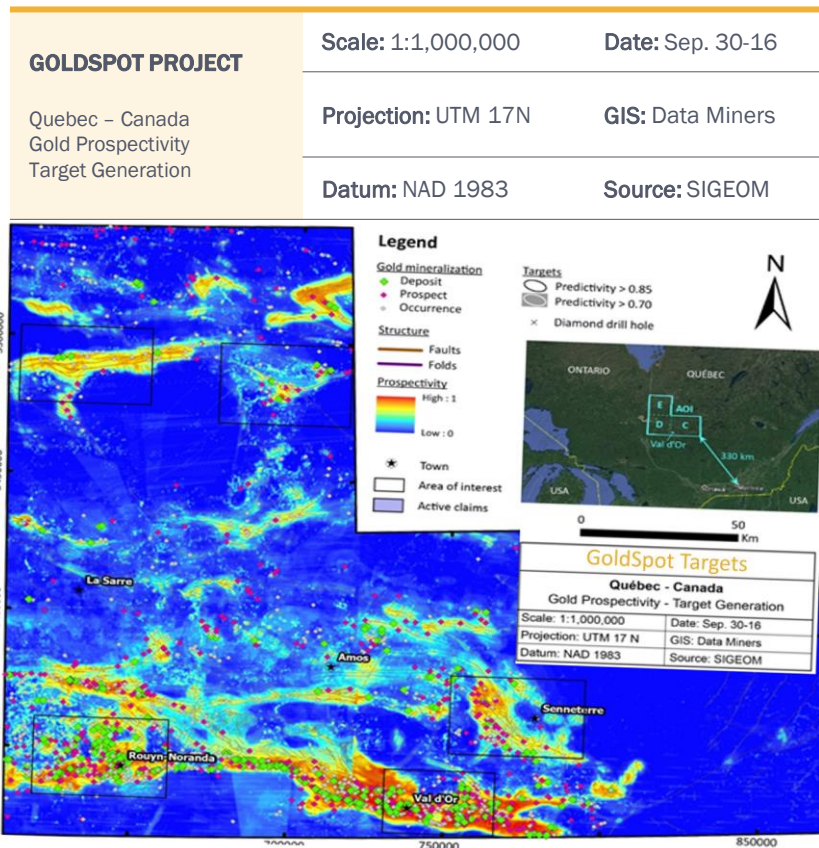
- Integrate all relevant data sets into a n-dimensional space
- Explore and quantify the different correlations, trends and relationships between the different variables



Targeting Example: Predicting Gold

A sample project outcome: predicting areas of high gold potential in Quebec

- Results are based on a prospectivity score from 0 to 1
- With a prospectivity over 0.9, the algorithm identified 86% of all known deposits in the area
- With a prospectivity score of 0.99, the algorithm generated 1,047 square kilometres of targets



GOLDSPOT

DISCOVERIES INC.

Unlocking the value of discovery through A.I.

Corporate Office

69 Yonge St. Suite 1010
Toronto, Ontario
M5E 1K3

Technical Office

980 Rue Cherrier, Suite 201
Montreal, Québec
H2L 1H7